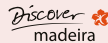


WORLD WOMEN'S JUNIOR WATER POLO CHAMPIONSHIPS

09th TO 15th
SEPTEMBER.19
FUNCHAL, MADEIRA



PARTNERS



GENERAL INFORMATION



POPULATION

Around 110.000 people now.

ACCESS

Madeira has the International Airport of Madeira which is 20 minutes away from the centre of Funchal and has all the facilities of an international airport as in any other European city. You may check all information about this airport here <http://www.anam.pt/>.

MEANS OF TRANSPORTATION

A network of transports will be prepared based upon buses who will transport the teams, in a circuit scheme between the hotels and the venue.

ACCOMMODATION OPTIONS

Funchal is the largest city in Madeira Island and is a touristic city so it has plenty of hotels around all city and near to the Venue (around at the most 15 minutes away).

We are thinking in working with Pestana group (mainly with four and five stars hotels). The hotels have all the facilities and equipment and are fully prepared, also the meals will be made here and so an especial buffet will be prepared for the teams.

ABOUT FUNCHAL



FUNCHAL (MADEIRA ISLAND) – PORTUGAL

In addition to its stunning scenery and very luxuriant mountains, this archipelago also includes a mild climate all year round a warm, welcome and peace, safety and security among its charms.

The capital of the archipelago is on the south coast of Madeira in beautiful bay washed by the warm waters of the Atlantic Ocean and surrounded by green mountains and deep valleys.

Funchal was erected to city on 21st August of 1508 and is now the main centre for trade, tourism and culture in the whole archipelago.

Exploring this traditional but cosmopolitan city, strolling through its charming streets lined with pretty, flowerdecked houses it's an adventure nobody will forget and something we want to provide to the Championships participants.

FPN has a lot of experience in the organisation of several swimming events both in national and International level such as the LEN Women's European U19 Water Polo Championships in 2018, the LEN Europeans Short Course in 1999, the Junior Europeans in 2004, the 2016 IPC Swimming European Open Championships also in Funchal (Madeira Island) and several Open Water World Cups since 2006 (annual regular basis) including the Olympic Qualification in 2012 and 2016.

THE VENUE

The competition was held at the Complexo de Piscinas Olímpicas do Funchal. The venue is owned by Funchal Regional Government and was built in 2004. The complex is set over an impressive five floors and includes an Olympic sized competition pool, a diving pool, and a 25 meters pool.

TECHNICAL INFORMATION

Spectator Tribune – 900 seats;

Public Areas – bar, entrance hall, stand;

Medical Facilities – Special situations 5 minutes from the Funchal's General Hospital;

Media Center – 1 room for more or less 20 people;

VIP & Hospitality Areas – 1 area for 20 people;

Competition and warm-up facilities – 1 Competition Pool (50M), 1 Warm-Up Pool (25M) at Funchal Olympic Pools Complex;

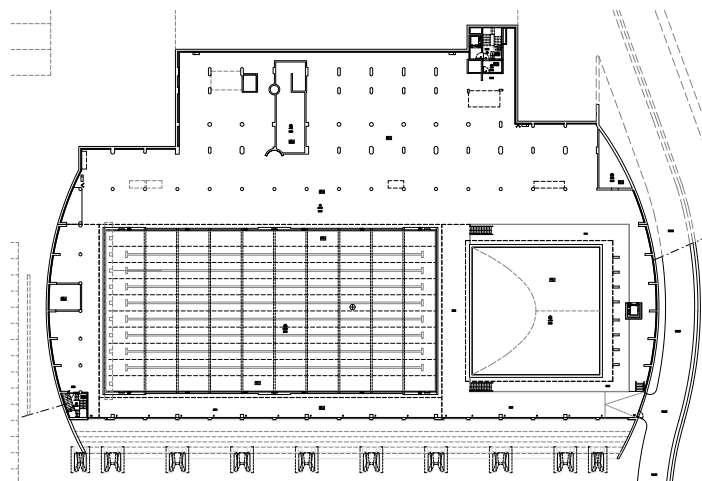
Training facilities – Naval do Funchal Pool Complex (25M), 10 minutes from the Funchal Olympic Pools Complex;

Press conference, reception & working facilities – several rooms available;

Accreditation Centers – one welcome desk each hotel;

Partner Display/ Promotion areas – in a welcome lounge;

Administration, service, storage, parking areas – several rooms available and a major storage room available in a third basement of the pool;



PARTICIPATING COUNTRIES

HUNGARY (HUN)

BRAZIL (BRA)

SOUTH AFRICA (RSA)

GREECE (GRE)

UNITED STATES (USA)

NETHERLANDS (NED)

PORTUGAL (POR)

CANADA (CAN)

AUSTRALIA (AUS)

KAZAKHSTAN (KAZ)

ITALY (ITA)

NEW ZEALAND (NZL)

JAPAN (JPN)

SPAIN (ESP)

RUSSIA (RUS)

CHINA (CHN)



GAME SCHEDULE

DAY 1			DAY 2			DAY 3			DAY 4		
DATE		MONDAY		TUESDAY		WEDNESDAY				THURSDAY	
TIME		9 TH SEP		10 TH SEP		11 TH SEP				12 TH SEP	
	#	PRELIMINARY ROUND									
9H00	1	HUN - AUS	9	JPN - AUS	17	HUN - JPN					
10H20	2	USA - JPN	10	HUN - USA	18	USA - AUS	10:00	25		4A - 4B	
11H40	3	BRA - KAZ	11	ESP - KAZ	19	BRA - ESP	11:20	26		2A - 3B	
13H00	4	NED - ESP	12	BRA - NED	20	NED - KAZ	12:40	27		3A - 2B	
16H00	5	GRE - NZL	13	CHN - NZL	21	GRE - CHN					
17H20	6	CAN - CHN	14	GRE - CAN	22	CAN - NZL	17:20	28		4C - 4D	
18H40	7	RSA - ITA	15	RUS - ITA	23	RSA - RUS	18:40	29		2C - 3D	
20H00	8	POR - RUS	16	RSA - POR	24	POR - ITA	20:00	30		3C - 2D	

DAY 5			DAY 6			DAY 7			
DATE		FRIDAY				SATURDAY		SUNDAY	
TIME		13 TH SEP				14 TH SEP		15 TH SEP	
	#	9 - 16				SEMI ROUND		1 - 8	
9H00	31	L25 - L28 (15/16)							
10H20	32	W25 - W28 (13/14)		10:00	39	L33 - L34 (11/12)			
11H40	33	L26 - L29		11:20	40	W33 - W34 (9/10)			
13H00	34	L27 - L30		12:40	41	L35 - L36			
16H00	35	1A - W29						45	L41 - L42 (7/8)
17H20	36	1B - W30		17:20	42	L37 - L38		46	W41 - W42 (5/6)
18H40	37	1C - W26		18:40	43	W35 - W36		47	L43 - L44 (2/3)
20H00	38	1D - W27		20:00	44	W37 - W38		48	W43 - W44 (1/2)

TRAINING SCHEDULE

	DAY 0		DAY 1	DAY 2	DAY 3
DATE	SUNDAY		MONDAY	TUESDAY	WEDNESDAY
TIME	8 TH SEP		9 TH SEP	10 TH SEP	11 TH SEP
	Competition Pool	Training Pool	Training Pool	Training Pool	Training Pool
9:00	HUN - AUS	GRE - NZL	GRE - NZL	CHN - NZL	GRE - CHN
10:00	USA - JPN	CAN - CHN	CAN - CHN	GRE - CAN	CAN - NZL
11:00	BRA - KAZ	RSA - ITA	RSA - ITA	RUS - ITA	RSA - RUS
12:00	NED - ESP	POR - RUS	POR - RUS	RSA - POR	POR - ITA
16:00	GRE - NZL	HUN - AUS	HUN - AUS	JPN - AUS	HUN - JPN
17:00	CAN - CHN	USA - JPN	USA - JPN	HUN - USA	USA - AUS
18:00	RSA - ITA	BRA - KAZ	BRA - KAZ	ESP - KAZ	BRA - ESP
19:00	POR - RUS	NED - ESP	NED - ESP	BRA - NED	NED - KAZ

	DAY 4	DAY 5	DAY 6	DAY 7
DATE	THURSDAY	FRIDAY	SATURDAY	SUNDAY
TIME	12 TH SEP	13 TH SEP	14 TH SEP	15 TH SEP
	Training Pool	Training Pool	Training Pool	Training Pool
9:00	4C - 4D	1A - W29	L37 - L38	L41 - L42 (7/8)
10:00	2C - 3D	1B - W30	W35 - W36	W41 - W42 (5/6)
11:00	3C - 2D	1C - W27	W37 - W38	L43 - L44 (2/3)
12:00	1A - 1B	1D - W28		W43 - W44 (1/2)
16:00	1C - 1D	L25 - L26 (15/16)		
17:00	4A - 4B	W25 - W26 (13/14)	L33 - L34 (11/12)	
18:00	2A - 3B	L27 - L29	W33 - W34 (9/10)	
19:00	3A - 2B	L28 - L30	L35 - L36	

COMPETITION POOL: FUNCHAL OLYMPIC POOLS COMPLEX

TRAINING POOL: NAVAL DO FUNCHAL POOL COMPLEX (25M)

ACCOMMODATION PLAN PRICES

The Portuguese Swimming Federation have considered all accommodation options within the city of Funchal and selected hotels that allow easy access to the competition venue whilst providing a central location. The accommodation options range are between 4, 4 superior and 5 stars, and provide a high level of service with good facilities including free Wi-Fi. The hotels have also been selected to allow for a simplified and unified transport system from the city centre to the training and competition venue.

The prices we present are per person, per night.

	HOTEL NAME	TWIN (PER PERSON)	SINGLE (PER PERSON)
FINA AND REFEREES	Carlton Pestana Hotel – 5*	-	180 €
TEAMS	Casino Park Pestana Hotel – 4+*	150€	170€
TEAMS	Casino Studios Pestana Hotel – 4*	140€	160€

FINA Bureau | Delegates | Referees will be accommodated at a 5* Hotel.

All prices listed above are including:

Full board (breakfast, lunch and dinner served in the hotels), Transfer, Free Wi-fi and Spa.

For all hotels listed above, the LOC will provide an extensive service including personalised management of all bookings with on-site representation at all hotels by way of a Sports Information Desk.

The LOC will also manage all rooming lists and meal requirements to ensure that all those attending the event benefit from the very best possible experience. Please send to secretaria@fpnatacao.pt the accommodation form as soon as possible.

ACCOMMODATION TRANSPORT

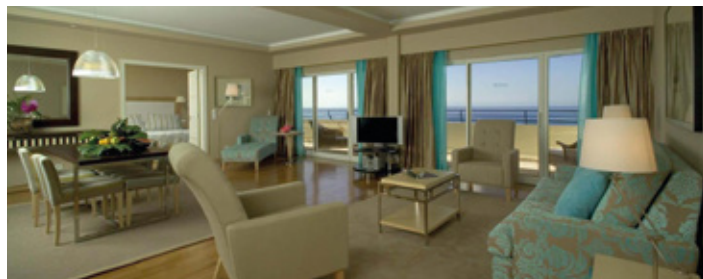
Transportation will be provided from the hotels to the venue. Closer to the event the routes will be published. The journey time will be no more than 15 minutes. These shuttle services will run on a regular basis taking into consideration the teams training and competition timetables.

PAYMENT INFORMATION

Prepayment of 50% until the **June 15th**. The remaining payment should be paid by **July 20th**.

Please note: All extra costs such as telephone and (mini) bar have to be paid upon check out. An extra meal costs 30€.

ACCOMMODATION PLAN FINA & REFEREES



PESTANA CARLTON HOTEL ★★★★★ <http://www.pestana.com/uk/hotel/pestana-carlton-madeira>

Pestana Group's first hotel and a landmark in the history of tourism in Portugal, the Pestana Carlton Madeira is one of the most lavish hotels in the country. The hotel stands on a cliff as a gateway to the lush island with stunning views over the Bay of Funchal, the amphitheater that characterizes the city.

This 5-star hotel enjoys a privileged location in Funchal. Thanks to the excellent combination of its familiar atmosphere and the sophistication of its premises, the Pestana Carlton Madeira serves as the reference point for any visitor to the region. It is only a 10 minute walking distance from the urban centre of Funchal and its Marina, at 20km's distance from Madeira International Airport and only 4km away from the Venue (around 15 minutes by bus).

ROOMS FACILITIES

Private bathroom with a bath tub and integrated or separated shower. Separate WC.

Hairdryer

Cable TV (English, Portuguese, German, French and Spanish channel) and radio

Direct Dial Telephone

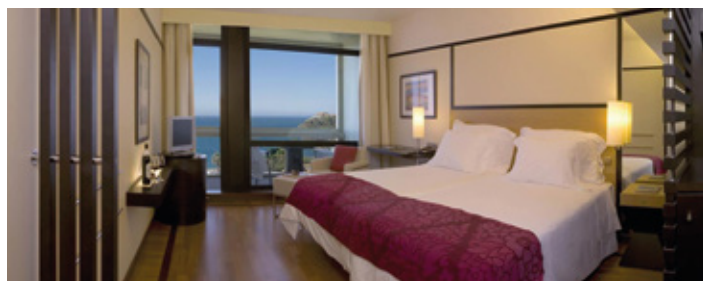
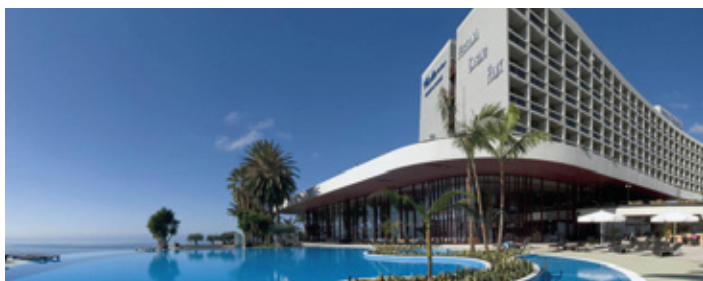
Air Conditioning

Safety Deposit Box

Internet Access

Please note: All extra costs such as telephone and (mini) bar have to be paid upon check out. An extra meal costs 30€.

ACCOMMODATION PLAN TEAMS



PESTANA CASINO PARK HOTEL ★★★★★ <http://www.pestana.com/uk/hotel/pestana-casino-park>

The sophisticated Pestana Casino Park was designed by the great master of world architecture Oscar Niemeyer and is part of the most emblematic touristic complexes in Madeira Island, and includes the well-known Casino of Madeira and the Congress & Convention Centre.

This hotel is located at 20 km's away from Madeira International Airport and only a few minutes' walk from the urban center of Funchal. The venue is 4 km away (around 15 minutes by bus).

ROOMS FACILITIES:

Private bathroom with a bath with shower and separate WC.

Hairdryer

LCD and DVD

Cable TV (English, Portuguese, German, French and Spanish channel) and Radio

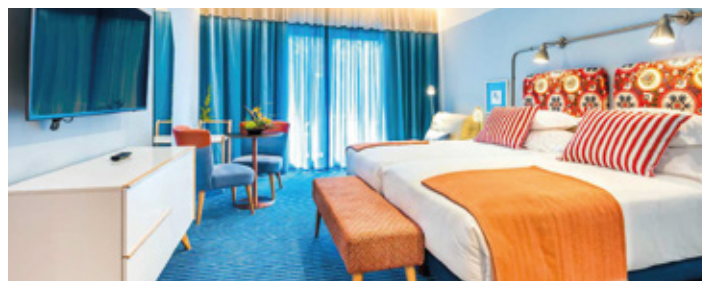
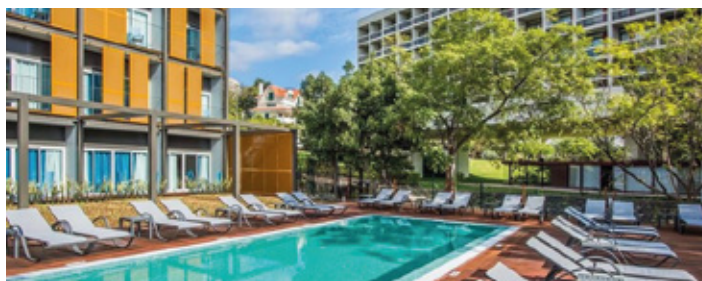
Dial-up Internet Connection

Air Conditioning

Free Digital Safe

Please note: All extra costs such as telephone and (mini) bar have to be paid upon check out. An extra meal costs 30€.

ACCOMMODATION PLAN TEAMS



PESTANA CASINO STUDIOS HOTEL ★★★★★ <https://www.pestana.com/en/hotel/pestana-casino-studios>

Only available for 4 delegations.

The Pestana Casino Studios is a hotel in Funchal, Madeira, near the Casino da Madeira, just a 5-minute walk from the city centre and the centre of social and cultural life. At the new Pestana Casino Studios, you will find an outdoor swimming pool and an adjacent paid car park.

The studios are spacious with a modern and minimalist décor. They offer a private balcony, many of which have panoramic views over the sea, a kitchenette equipped with a refrigerator, microwave, Wi-Fi, a safe, LCD television and air conditioning.

This hotel is located only 5 minutes on foot from the centre of Funchal, where you can take the gondola up to the Igreja do Monte with its fabulous gardens and incredible views. Madeira International Airport is located only 20km away.

ROOMS FACILITIES:

Shower

Hairdryer

LCD TV

Cable TV (English, Portuguese, German, French and Spanish channel) and Radio

Free Wi-Fi

Air Conditioning

Electric Tea Kettle

Digital Safe

Please note: All extra costs such as telephone and (mini) bar have to be paid upon check out. An extra meal costs 30€.

